



"SAFETY FIRST"



"SAFETY FIRST"

[www.bsgrup.net](http://www.bsgrup.net)



## TABLE OF CONTENTS

<b>1- About Us</b>
<b>2- Production Systems</b>
<b>3-10- Automatic Scaffolding Systems</b>
CR 1250 Model
CR 1500 Model
CR 2500 Model
CR 3000 Model
CR TWIN Model
Technical Equipment
<b>11-14- Facade Access Systems</b>
CRM Monorail System
CRM 1000 Model
CRM 1250 Model (Parapet In-Rail)
CRM 1500 Model
<b>15-20- Construction Site Lifts and Cranes</b>
CRA 1000 Model
CRV 1000 Model
CRA 2000 Model
CRA TWIN Model
CRA Model Technical Equipment
<b>21-22- Safety Scaffolding Systems</b>
Carrier Scaff Equipment
Carrier Scaff Assembly
<b>23- References</b>
<b>24- Affiliates and Dealers</b>
<b>25- Certificates</b>



## About Us

As BS GROUP, we offer facade scaffolding systems, load and personnel carrier systems and facade access systems to all users with our professional experience, renewed service understanding, experienced, dynamic and expert team and up-to-date production technology. We meet the demands in the construction and logistics sector with more efficient and more economical production automation systems in a solution-oriented and complete manner.

Our aim is to improve the production technology day by day and continue a steady development in order to meet your demands in the most economical and efficient way with the CARRIER LIFT and CARRIER SCAFF brand under the roof of our group, which continues to work with the goal of becoming the leading company in the sector.

Our vision is to be a reliable player in the global market with the developing facade scaffolding systems in the world and in our country, to realize the production of load and personnel carrier products by applying more reliable technologies, modular, fast and easy to assemble, recycling and suitable for use, in line with the climatic conditions in the region, engineering standards and the usage needs of our customers.

Our mission is to produce fast and economical solutions to the changing product demands of our customers without compromising our "SAFETY FIRST" principle, to make continuous technological investments in order to sustain the interest in our products and to increase product quality, to contribute to the industrial development of our country in parallel with the developing domestic volume and to raise the level of employment.

Because we love our country and our people...







**CARRIER LIFT USER BENEFITS;**

- **EFFICIENCY**
- **SAVING TIME**
- **HIGH SAFETY STANDARTS**
- **FAST ASSEMBLY AND DISASSEMBLY**
- **ERGONOMIC AND COMFORTABLE WORKING ENVIRONMENT**
- **HIGH LOAD CAPACITY**
- **EASY ACCESS TO HIGH-RISE BUILDINGS**
- **Taken from the official sources of the T.R. MINISTRY OF LABOR AND SOCIAL SECURITY regarding the advantages of the mast climbing work platform.**

**CARRIER LIFT SAFETY STANDARTS**

- **SPEED SENSITIVE PARACHUTE SYSTEM**
- **ELECTROMAGNETIC BRAKE SYSTEM**
- **UPPER AND LOWER LIMIT STOP SYSTEM**
- **EMERGENCY STOP BUTTONS**
- **FLOOR STOPS**
- **SOUND SIGNAL SYSTEM**
- **OPEN DOOR STOP SYSTEM**
- **TELESCOPIC EXTENSION WARNING SYSTEM**
- **WARNING AND STOPPING SYSTEMS SYNCHRONIZED WITH THE DRIVERS USED**
- **PREVENTION OF MECHANICAL CONTRACTIONS WITH BALANCE SENSORS**
- **ALL MECHANICAL MOVEMENTS DURING USE ON OUR PLATFORMS ARE PROVIDED BY SPEED CONTROL SYSTEMS (DRIVER).**
- **THE PARACHUTE SYSTEM WE USE IS OUR OWN PRODUCTION UNDER OUR BRAND NAME.**




**CR 1250 MODEL**
**SINGLE MAST**

Maximum Load	1250 kg	Speed	10 mt/min
Maximum Width	10 mt	Engine Power	2x2.2 kW
Platform Dimensions	1000 mm x 1500 mm	Maximum Current Drawn	16 A
Maximum Height	200 mt	Voltage	380 V.
Connection Height without Anchorages	6 mt	Mast Weight	62 Kg.
Mast Height	1.5 mt	Mast Dimensions	440 x 440 x 1500 mm

- Carrying capacity includes personnel weights. Varies according to the platform width.

**Automatic Scaffolding Systems  
CR 1500 Model Single Mast**



CR 1500 MODEL			
SINGLE MAST			
Maximum Load	1500 kg	Speed	10 mt/min
Maximum Width	10 mt	Engine Power	2x2.2 kW
Platform Dimensions	1320 mm x 1500 mm	Maximum Current Drawn	16 A
Maximum Height	200 mt	Voltage	380 V.
Connection Height without Anchorages	6 mt	Mast Weight	75 Kg.
Mast Height	1.5 mt	Mast Dimensions	505 x 525 x 1500 mm

- Carrying capacity includes personnel weights. Varies according to the platform width.





<b>CR 2500 MODEL</b>			
<b>DUAL MAST</b>			
Maximum Load	2500 kg	Speed	10 mt/min
Maximum Width	30 mt	Engine Power	4x2.2 kW
Platform Dimensions	1000 mm x 1500 mm	Maximum Current Drawn	25 A
Maximum Height	200 mt	Voltage	380 V.
Connection Height without Anchorages	6 mt	Mast Weight	62 Kg.
Mast Height	1.5 mt	Mast Dimensions	440 x 440 x 1500 mm

- Carrying capacity includes personnel weights. Varies according to the platform width.



**Automatic Scaffolding Systems  
CR 3000 Model Dual Mast**



CR 3000 MODEL			
DUAL MAST			
Maximum Load	3000 kg	Speed	10 mt/min
Maximum Width	30 mt	Engine Power	4x2.2 kW
Platform Dimensions	1320 mm x 1500 mm	Maximum Current Drawn	25 A
Maximum Height	200 mt	Voltage	380 V.
Connection Height without Anchorages	6 mt	Mast Weight	75 Kg.
Mast Height	1.5 mt	Mast Dimensions	505 x 525 x 1500 mm

- Carrying capacity includes personnel weights. Varies according to the platform width.



CR TWIN MODEL			
DUAL MAST			
Maximum Load	2500 kg	Speed	10 mt/min
Maximum Width	30 mt	Engine Power	2x2.2 kW
Platform Dimensions	1320 mm x 1500 mm	Maximum Current Drawn	16 A
Maximum Height	200 mt	Voltage	380 V.
Connection Height without	6 mt	Mast Weight	75 Kg.
Mast Height	1.5 mt	Mast Dimensions	505 x 525 x 1500 mm

- Carrying capacity includes personnel weights. Varies according to the platform width.

## Automatic Scaffolding Systems Technical Equipment

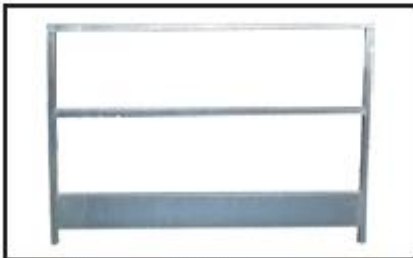


CODE	DEFINITION	TECHNICAL INFO	WEIGHT
CR-10001	Unit	Electrical motor with electromagnetic brake system	650 kg
CODE	DEFINITION	TECHNICAL INFO	WEIGHT
CR-10002	Mast	It is; -the vertical walkway of the machine. -1.50 meters long. -produced from 40x40x4 mm profile and 16 filled iron. - dip galvanized coating.	63 kg
CODE	DEFINITION	TECHNICAL INFO	WEIGHT
CR-10003	Platform	Personnel working platform Produced from 80x40x4 mm profile Dip galvanized coating	75 kg
CODE	DEFINITION	TECHNICAL INFO	WEIGHT
CR-10004	Mast Protection	Used as a protector around the mast It is produced from 40x20 profile and perforated sheet. Static painted.	25 kg
CODE	DEFINITION	TECHNICAL INFO	WEIGHT
CR-10005	Final Mast	Used to finish the assembly Gearless. Produced from 40x40x4 mm profile and 16 filled iron. Static painted.	30 kg
CODE	DEFINITION	TECHNICAL INFO	WEIGHT
CR-10006	Drawbar	It provides the machine's floor resistance and scale function. Consists of 80x120x4 mm profile and polyemit wheel. Hot dip galvanized coated.	120 kg





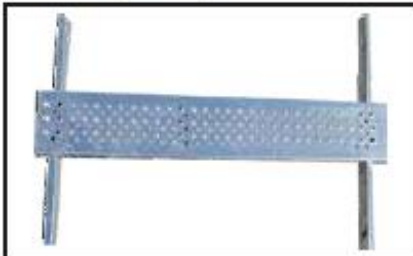
CODE	DEFINITION	TECHNICAL INFO	WEIGHT
CR-10007	Side Guard	Adjustable Platform with side closure. It consists of 30x30 profile and twisted sheet. Electro Galvanized coating.	25 kg



CODE	DEFINITION	TECHNICAL INFO	WEIGHT
CR-10008	Front Guard	Platform with front closure. It consists of 30x30 profile and twisted sheet metal. Electro Galvanized coating.	7.5 kg



CODE	DEFINITION	TECHNICAL INFO	WEIGHT
CR-10009	Ladder	Allows personnel to reach the platform. Manufactured from 2x3 checkered plate. Galvanized coating.	10 kg



CODE	DEFINITION	TECHNICAL INFO	WEIGHT
CR-10010	Extension Profile and Steel Plank	Used in building recesses and protrusions. 30x70x2.5 mm sheet, 40x80 profile is used. Electro Galvanized coating.	7 kg



CODE	DEFINITION	TECHNICAL INFO	WEIGHT
CR-10011	Electrical Panel	Main control panel where all mechanical movements are provided.	5 kg



CODE	DEFINITION	TECHNICAL INFO	WEIGHT
CR-10012	Mast Connection Apparatus	Connects the anchorage set and the mast together. It is produced from 6 mm laser cut and 42 pipe.	15 kg



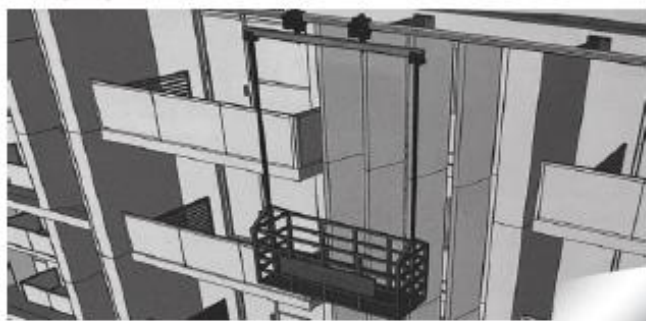
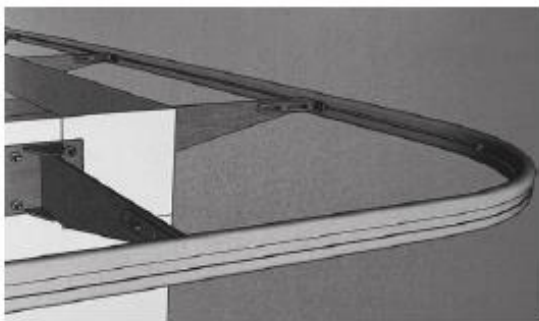
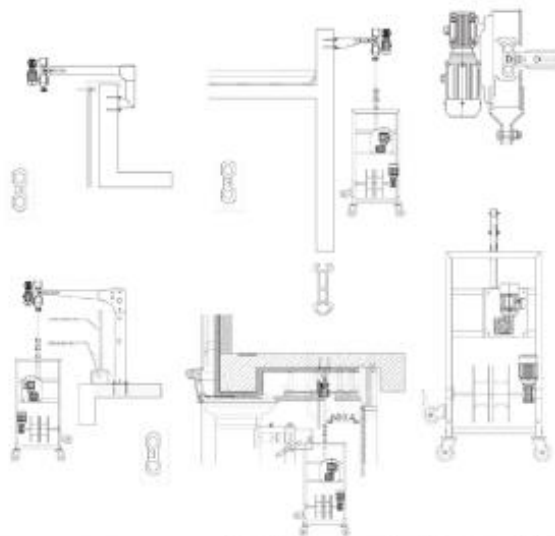
CODE	DEFINITION	TECHNICAL INFO	WEIGHT
CR-10013	Mast Connection Pipe	Connects the anchorage set and the mast together. It is produced from 6 mm laser cut and 42 pipe.	3 kg

## Facade Access Systems CRM Monorail System

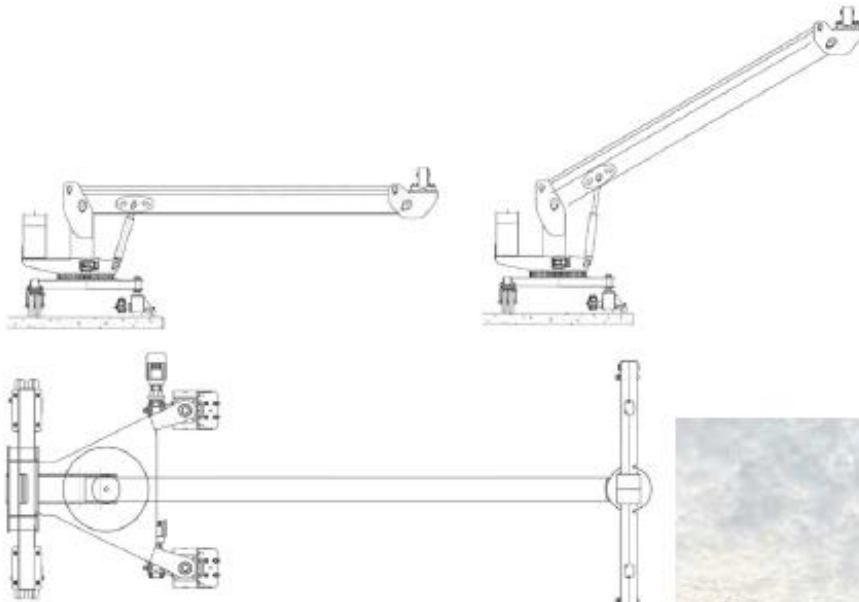


As with our other products under the Carrier brand, in the field of Facade Maintenance Units, Facade Access Systems: We provide production, service and consultancy services.

- \* It is a facade cleaning system that can move horizontally and vertically on the aluminum rail (monorail) mounted on the building facade with special connection legs.
- \* Single or double platform can be used according to the request and building structure.
- \* The platform can move manually or automatically with the special moving carriage.
- \* Aluminum monorail is produced and assembled according to the shape and length of the building facade.
- \* Monorail carrier column can be assembled from the front facade of the building, inside the parapet, behind the parapet, on the terrace floor or under the eaves.
- \* Rails can be painted in natural aluminum color or according to request.
- \* All movements can be controlled from the working platform.
- \* Vertical movement is realized with the motorized climbing mechanism on the working platform.
- \* Does not damage glass surfaces with 2 polyurethane facade wheels on the platform.
- \* Safety precautions such as double safety rope, safety lock system, rope tension control provide a safe working environment.
- \* Overload detection system, lower anti-crash bar, limit switch and upper limit switch prevent operator errors.
- \* Production and assembly are carried out in accordance with European norms, EN 1808 standards.



- \* Single boom facade cleaning and maintenance systems.
- \* Boom length varies depending on the building.
- \* Applied for skyscrapers with high diameters.
- \* The body height can be raised to overcome parapets or other obstacles.
- \* These systems can be fixed or moved on rails depending on the project.
- \* With the spreader arm at the end of the boom, easy positioning to the platform is provided.
- \* It can access the facade in the most suitable way with its turning system in the center of the body.
- \* Double rope working principle, secondary safety locking system, over speed locking mechanism, rope tensioning system, and manual descent device ensures safe operation of the system.
- \* Operator errors are prevented with the lower limit ban and upper limit device.
- \* Designed and manufactured in accordance with European standards (EN 1808).



The Platform Used: Self-Propelled Platform/  
Rope Drum Winding

Operating Capability: 240 Kg

Safety Arrangements: Primary and Secondary Safety  
Arrangements in accordance with EN 1808 Standard

Rope Type: 4 Pieces 8.3 mm (Galvanized Steel Rope)

Operating Voltage: 380 Volt – 50 Hz

Controlling Type: Cable/Conduct Cable

Vertical Operating Speed: 8 m/min

Horizontal Operating Speed: 6m/min

Centre Rotation Speed: 5m/min

General Rail Axis: 2.000mm/2.500mm/3.000mm or above  
(Varies depending on the project)

\*The specified features are for general purposes, these  
features vary depending on the project.

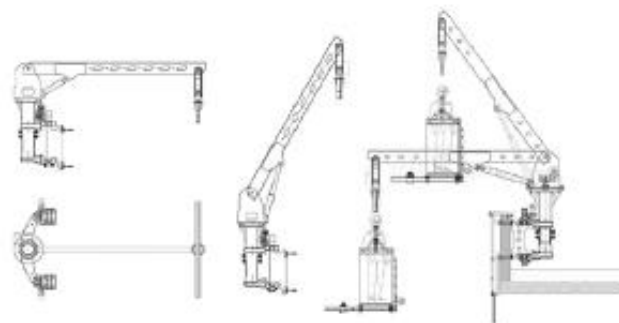
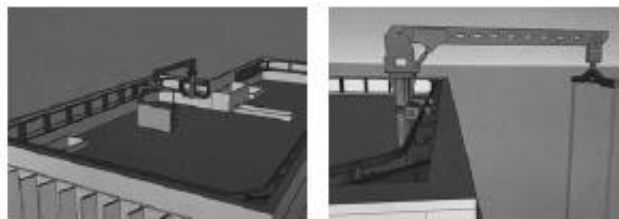
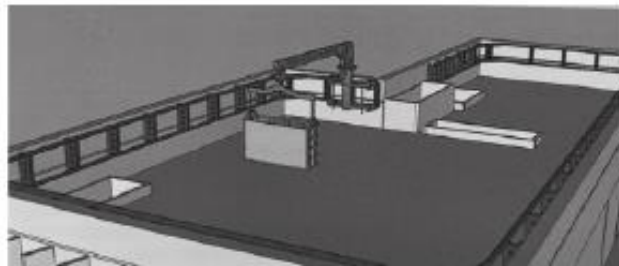




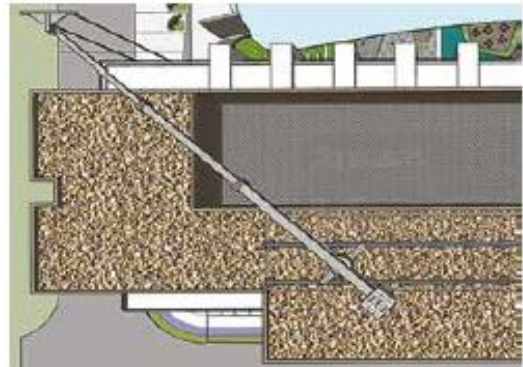
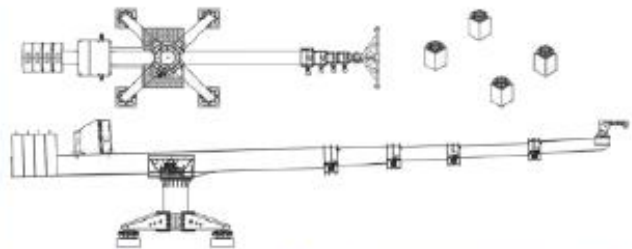
## Facade Access Systems CRM 1250 Parapet In-Rail



- \* It is a facade cleaning system that moves on a dual rail mounted on the inside of the parapet on the building terrace.
- \* Designed to be used in narrow space at terrace level.
- \* Can be applied to buildings with necessary reinforced parapets that can meet machine loads.
- \* Boom length can be produced between 2.5 meters and 5 meters according to the building facade.
- \* Double person motorized or drum platforms can be used according to the project and request.
- \* Horizontal movement is made on dual rails.
- \* For the machine to work on all facades, a minimum of 1 meter movement area is required from the parapet backwards.
- \* Provides easy access to corners with the separator arm that can rotate  $\pm 45^\circ$  to the boom end.
- \* With the motorized rotation capability of the main body, access to the desired point on the facade is provided.
- \* With the hydraulic system, the distance of the working platform to the facade can be adjusted and the platform can be parked on the terrace.
- \* All movements can be controlled from the control panels located on the working platform in the main body.
- \* Cable control or control system for wire rope can be applied optionally.
- \* Safety measures such as double safety rope, safety lock system, rope tension control provide a safe working environment.
- \* Overload detection system, lower anti-crash bar, limit switch and upper limit switch prevent operator errors.
- \* Production and assembly are carried out in accordance with European norms, EN 1808 standards.



- \* It is a facade cleaning system with telescopic boom.
- \* Telescopic boom machines are designed according to the shape of the building.
- \* All facades can be reached with a single positioning.
- \* These systems are preferred for buildings with long-length access with high elevation differences.
- \* Applied for skyscrapers with high diameters.
- \* Depending on the project, these systems can be fixed positioned or can move on the rail.
- \* Booms of telescopic boom machines can be raised with rack and pinion gear system.
- \* Body height can be raised to overcome parapet or other obstacles.
- \* With the separator arm at the end of the boom, easy positioning to the platform is provided.
- \* With the rotation system in the center of the body, it can access the facade in the most suitable way.
- \* Double rope operating principle, secondary safety locking system, over speed locking mechanism, rope tensioning system, manual descent device ensure safe operation of the system.
- \* Operator errors are prevented with the help of lower limit ban and upper limit device.
- \* Designed and manufactured in accordance with European standards (EN 1808).



The Platform Used: Self-Propelled Platform/  
Rope Drum Winding

Operating Capability: 240 Kg

Safety Arrangements: Primary and Secondary Safety

Arrangements in accordance with EN 1808 Standard

Rope Type: 4 Pieces 8.3 mm (Galvanized Steel Rope)

Operating Voltage: 380 Volt – 50 Hz

Controlling Type: Cable/Conduct Cable

Vertical Operating Speed: 8 m/min

Horizontal Operating Speed: 6m/min

Centre Rotation Speed: 5m/min

General Rail Axis: 2.000mm/2.500mm/3.000mm or above  
(Varies depending on the project)

\*The specified features are for general purposes, these features vary depending on the project.





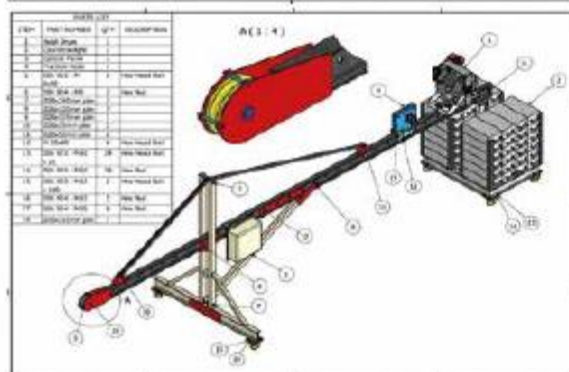
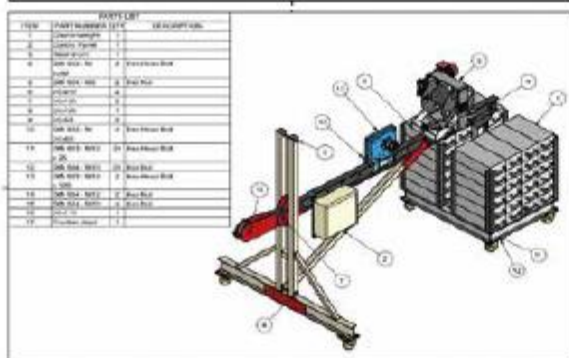
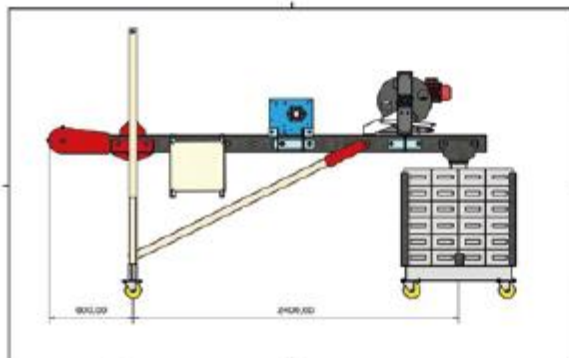
With its large cabin size, high carrying capacity and strong cabin body, it offers superior service, high safety and full-length work. With our CRA 2000 / CR 1000 / CRV 1000 TRACTIONAL CRANE systems, which will be your solution partner up to 200 meters in limited shaft ranges with different door designs and working area, are available to you with our fast service and wide logistics network.





<b>CRA 1000 MODEL</b>			
<b>SINGLE MAST</b>			
Maximum Height	200 mt.	Engine Power	7.5 kW*2
Maximum Load	1000 kg.	Mast Dimensions	510x510x1508 mm
Mast Weight	78 kg.	Connection Height without Anchorages	6 mt
Cabin Dimensions	1.4m x 1.5 x 2.3m	Safety Device	GF (Speed sensitive safety device)
Maximum Speed	0-30 mt/dk., 0-60 mt/min.		

## Construction Site Lifts and Cranes CRV 1000 Model



CRV 1000 MODEL			
ROPED SYSTEM			
Maximum Height	200 mt.	System Weight	1000 kg.
Maximum Load	1000 kg.	Power	4 kW
Balance Weight	1000 kg.	Galvanized Steel Rope	6*19
Boom Length	2000mm	Outer Coating	Galvanized
Maximum Speed	11 mt./sec.		







CRA 2000 MODEL			
SINGLE MAST			
Maximum Height	200 mt.	Engine Power	11 kW*2
Maximum Load	2000 kg.	Mast Dimensions	510x510x1508 mm
Mast Weight	78 kg.	Connection Height without Anchorages	6 mt
Cabin Dimensions	1.4m x 3.0m x 2.3m	Safety Device	GF (Speed sensitive safety device)
Maximum Speed	0-36 mt/min., 0-52 mt/min., 0-90 mt/min.		



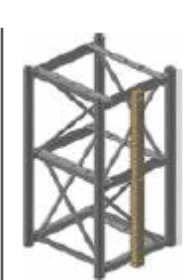


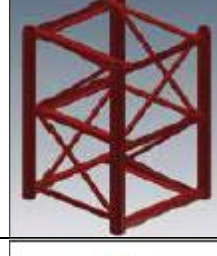






**Construction Site Lifts and Cranes**  
**CRA TWIN Model Single Mast**



CRA TWIN MODEL			
SINGLE MAST			
Maximum Height	200 mt.	Engine Power	11 kW*4
Maximum Load	2000 kg.	Mast Dimensions	760x760x1508 mm
Mast Weight	125 kg.	Connection Height without Anchorages	6 mt
Cabin Dimensions	1.4m x 3.0m x 2.3m	Safety Device	GF (Speed sensitive safety device)
Maximum Speed	0-36 mt/min, 0-52 mt/min, 0-90 mt/min		



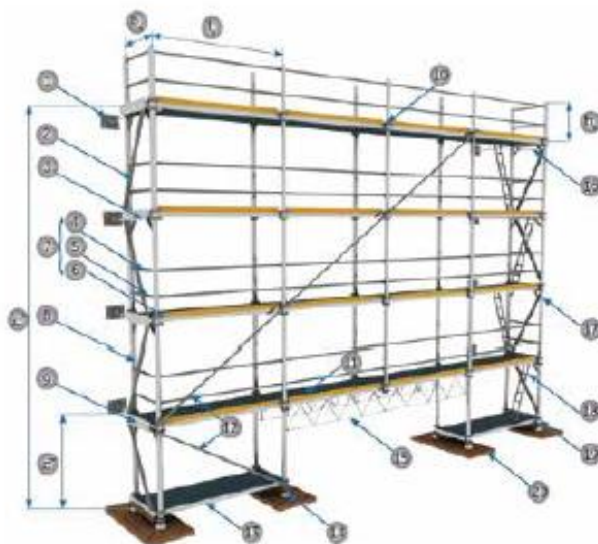
	<b>BASE UNIT</b> The Base Unit is a steel cage system that transfers the weight of the system to the ground and on which the entire system is carried.		<b>CABLE TROLLEY</b> It is a system that moves with the help of wheels on the mast designed to allow the cable to go up and down with the lift.
	<b>COLUMN (MAST)</b> Column (Mast) is the part that enables the lift made of St - 52 steel seamless pipe to rise vertically		<b>ANCHORAGE</b> It is a system that allows the masts formed by meshing profiles in the form of steel cages to be connected to the building at certain intervals.
	<b>CABIN</b> A system that includes walking groups, parachute brake, scale, loading and unloading doors.		<b>STOPPING (RED) MAST</b> The stopping mast is the red coated mast placed on the top of the masts and has no rack on it.
	<b>MAIN PANEL</b> The main panel is positioned on the cabin. It contains electronic components and electrical switchgear to ensure smooth and safe movement of the lift.		<b>CABIN PROTECTION</b> It is the system used to close the surroundings of the lift after its installation on the facade.
	<b>POWER CABLE</b> A system that enables the lift to move by transferring the energy coming from the network to the lift panel.		<b>ENGINE UNIT</b> A system that operates by transferring motion to the racks on the masts with the help of pinion gears connected to gear motors with 2 electromagnetic brakes.

## Safety Scaffolding Systems

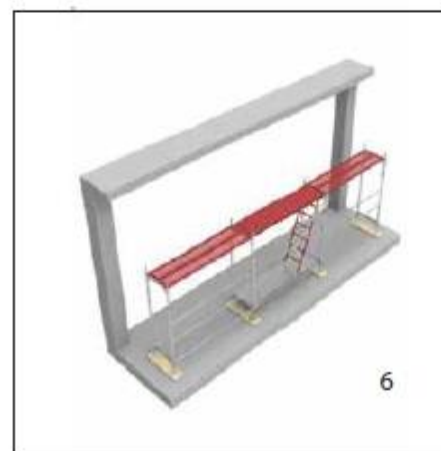
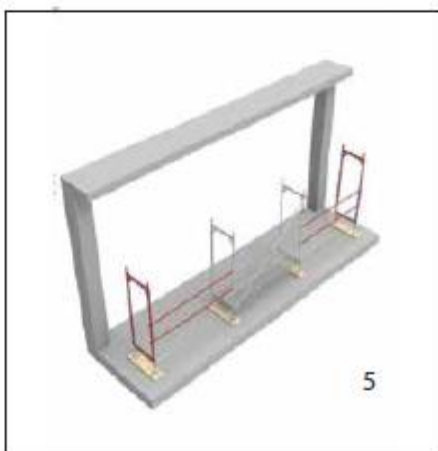
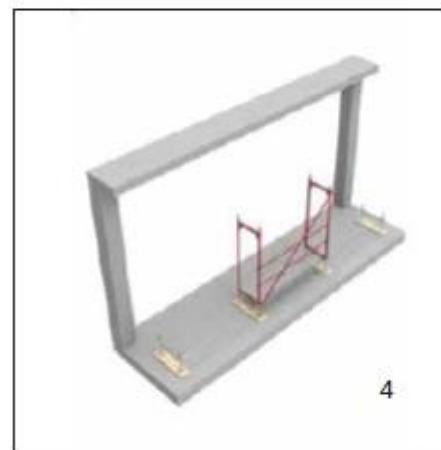
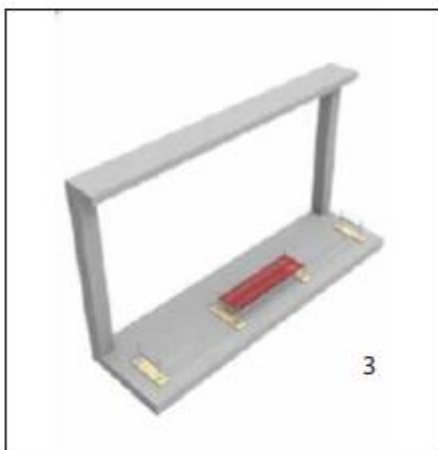
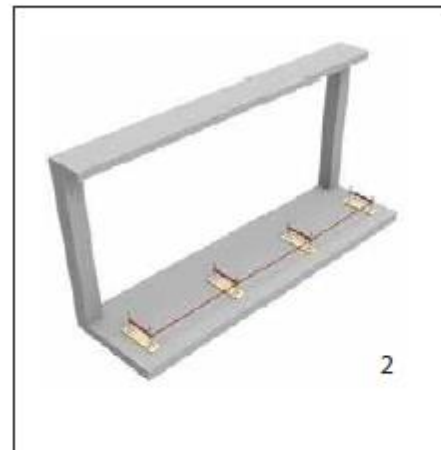
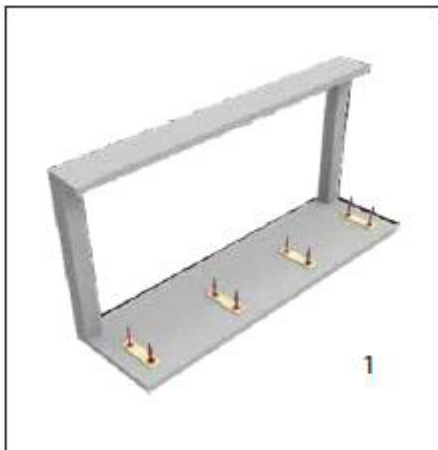
Carrier Scaff Equipment



1. Considering the scaffolding installation project, the heights and positions of the lower adjustment shafts are adjusted.
2. The starting legs are mounted on the adjustment shafts, the distances are clarified with horizontal connections and the system is leveled.
3. In ranges with ladder platforms, the platforms are mounted on the starting legs.
4. The first row using cross bracing is created using the first module, panel, horizontal bracing and cross bracing according to the project.
5. The installation of the first row is completed.
6. Upper floor platforms (pay attention to the ladder detail) are assembled.
7. The second row using cross connection is created using the first module, panel, horizontal connection and cross connection according to the project.
8. The second row installation is completed and the heels are assembled.
9. According to the project, scaffolding system is anchored to the façade.
10. Installation continues in the same sequence according to the project.







## References





## Affiliates and Dealers



### BS LİFT PAZARLAMA SAN. ve TİC. A.Ş. (BS LIFT MARKETING INDUSTRY and TRADE INC. CO.)

IS THE SOLE AUTHORIZED SALES AND MARKETING DISTRIBUTOR OF CARRIER LIFT AND CARRIER SCAFF BRANDS THAT WE PRODUCE IN TURKIYE. IT COORDINATES THE SALES AND DISTRIBUTION TRANSACTIONS OF ALL OUR DISTRIBUTORS, DEALERS AND SOLUTION PARTNERS OPERATING IN AND OUTSIDE THE COUNTRY AND CARRIES OUT THEIR SALES AND DISTRIBUTION TRANSACTIONS AND OPERATIONAL TRANSACTIONS.

[www.bsgrup.net](http://www.bsgrup.net) [info@bsgrup.net](mailto:info@bsgrup.net)



### BK LIFT LLC

IS OUR MAIN AND ONLY DISTRIBUTOR OF ALL PRODUCT GROUPS WE PRODUCE UNDER THE BRAND OF CARRIER IN THE RUSSIAN FEDERATION. IT PROVIDES SALES OF ALL PRODUCTS UNDER THE BRAND OF CARRIER, AS WELL AS SALES, LEASING AND SERVICE SERVICES IN FACADE SCAFFOLDING SYSTEMS. WITH ITS WIDE PRODUCT RANGE AND HIGH STOCK CAPACITY, IT MAINTAINS ITS DOMINANT POSITION IN THE MARKET IN A RELIABLE AND STABLE MANNER.



### RENTSTAR LLC

IS THE AUTHORIZED MAIN DEALER IN THE RUSSIAN MARKET WITH BOTH PRODUCTION, SALES, LEASING AND SERVICE ACTIVITIES OF OUR LOAD AND PERSONNEL CARRYING LIFTS THAT WE HAVE PRODUCED UNDER THE CARRIER BRAND AND USED IN ALL PROJECTS.

[www.rent-star.ru](http://www.rent-star.ru) [info@rent-star.ru](mailto:info@rent-star.ru)



### PORTMAKSAN PLATFORM ASANSÖR SAN. ve TİC. LTD. ŞTİ. (PORTMAKSAN PLATFORM LIFT INDUSTRY and TRADE LIMITED CO.)

IS THE PRODUCTION CENTER OF AUTOMATIC SCAFFOLDING SYSTEMS, SAFETY SCAFFOLDING SYSTEMS AND FACADE ACCESS SYSTEMS BELONGING TO CARRIER LIFT AND CARRIER SCAFF BRANDS WITHIN OUR GROUP, WHICH WE SELL AND DISTRIBUTE.

IT PROVIDES UNINTERRUPTED AND RELIABLE PRODUCTION WITH HIGH TECHNOLOGY AND R&D STUDIES WITH INTERNATIONAL STANDARD AND QUALITY CERTIFICATES.

[www.portmaksan.com](http://www.portmaksan.com) [info@portmaksan.com](mailto:info@portmaksan.com)



### METRİK METAL LLC

REALIZES THE PRODUCTION OF STEEL EQUIPMENT BELONGING TO THE BRANDS WITHIN OUR GROUP IN THE RUSSIAN MARKET. FURTHERMORE, IT ALSO MANUFACTURES STEEL EQUIPMENT AND ANCHORAGES FOR OTHER COMPANIES THAT WE SERVE IN THE SAME SECTOR OR THAT OPERATE IN THE FACADE CLADDING SECTOR. WITH ITS FACILITY AND PRODUCTION TECHNOLOGY, IT IS THE MAIN AND AUTHORIZED SUPPLIER IN THE EQUIPMENT GROUP BELONGING TO ALL BRANDS WITHIN OUR COMPANY, WHICH HAS THE CAPACITY TO PRODUCE IN FULL QUANTITY AND HIGH STANDARDS.

[www.metrikmetal.com](http://www.metrikmetal.com) [info@metrikmetal.com](mailto:info@metrikmetal.com) Tel: +7 (985) 295 74 34



### EMRE AĞAOĞLU İNŞAAT LTD. ŞTİ. (EMRE AĞAOĞLU CONSTRUCTION LIMITED CO.)

PROVIDES SALES, LEASING AND SERVICE ACTIVITIES AS THE AUTHORIZED MAIN DEALER OF THE FACADE SCAFFOLDING SYSTEMS AND LOAD AND PERSONNEL CARRIER LIFT GROUP IN TURKIYE, WHICH WE HAVE PRODUCED UNDER THE CARRIER BRAND.

[www.otomatikiskele.com](http://www.otomatikiskele.com) [info@otomatikiskele.com](mailto:info@otomatikiskele.com) Tel: +90 (507) 745 97 85



### 2B YATIRIM ve LOJİSTİK LLC (2B INVESTMENT AND LOGISTICS LLC)

IS ACTIVE IN THE RUSSIAN MARKET AS AN INVESTMENT DEVELOPMENT AND LOGISTICS SERVICES. REALIZES ALL LOGISTICS ACTIVITIES INSIDE OR OUTSIDE THE FIELD ON A DAILY OR MONTHLY BASED ON PROJECT BASIS WITH A HIGH NUMBER AND VARIETY OF VEHICLES. IT PROVIDES AN ECONOMICAL AND FAST SOLUTION PARTNERSHIP BASED ON PROJECT DEMANDS.



## Certificates





"SAFETY FIRST"



"SAFETY FIRST"

[info@bsgrup.net](mailto:info@bsgrup.net)  
[www.bsgrup.net](http://www.bsgrup.net)